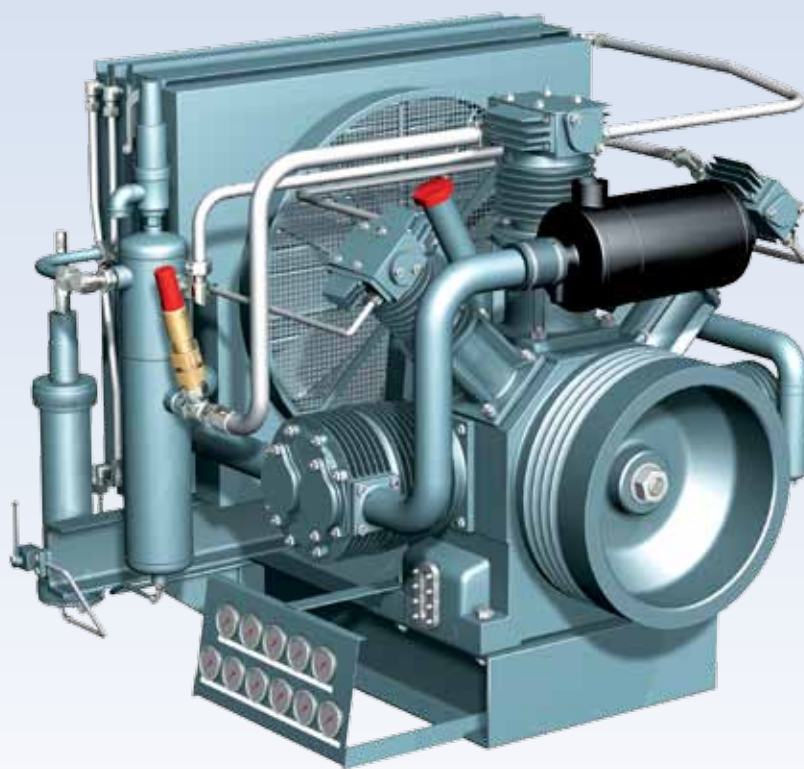
The background of the top half of the page features three vertical panels. The left panel shows an industrial refinery with tall distillation columns and a large horizontal pipe in the foreground. The right panel is split into two sections: the top shows a large offshore oil rig at sea, and the bottom shows a modern industrial building with a flat roof and large windows.

# **aircooled/ watercooled compressor systems**

industrial applications



[www.lmf.at](http://www.lmf.at)



your high pressure solution



# company profile

**LMF** is the leading Austrian manufacturer of high-pressure piston compressor systems for air, natural gas, technical and industrial (process) gases.

These systems, with power rates from 20 to 6,200 kW (30 to 8,300 hp) and for pressures of up to 700 bar (10,150 psi), are designed and manufactured in accordance with internationally applicable standards.

**LMF** has a long experience of over 60 years in the production of compressors and offers its customers the benefits of the latest developments in design engineering, proven manufacturing methods, testing under full load, installation and after sales service, all from a single source.

## GEOGRAPHICAL POSITION

Leobersdorf is located approx. 30 km south of the capital of Austria, Vienna, and has direct access to the freeways, both to the city of Vienna and to the Vienna International Airport.

**LMF** Headquarters in Leobersdorf, Austria

Furthermore **LMF** is a leading compressor manufacturer for:

- API 11P/ API 618 Compressors for the Petro & Chemical Industry
- Mobile Systems for Pipeline Evacuation, Nitrogen Generation and Pipeline Testing
- Industrial Applications
- CNG/CBG-Systems





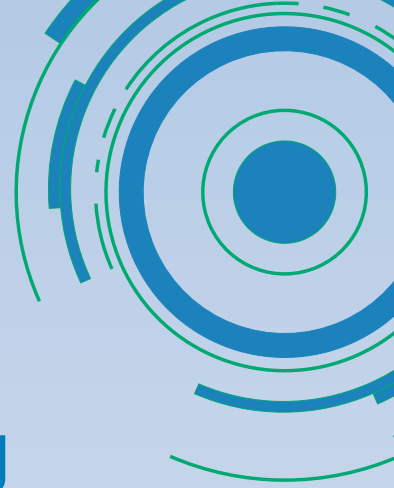
# contents

ENGINEERING	04
AIRCOOLED SOLUTIONS	06
WATERCOOLED SOLUTIONS	10
TAILOR-MADE SOLUTIONS	11



[www.lmf.at](http://www.lmf.at)

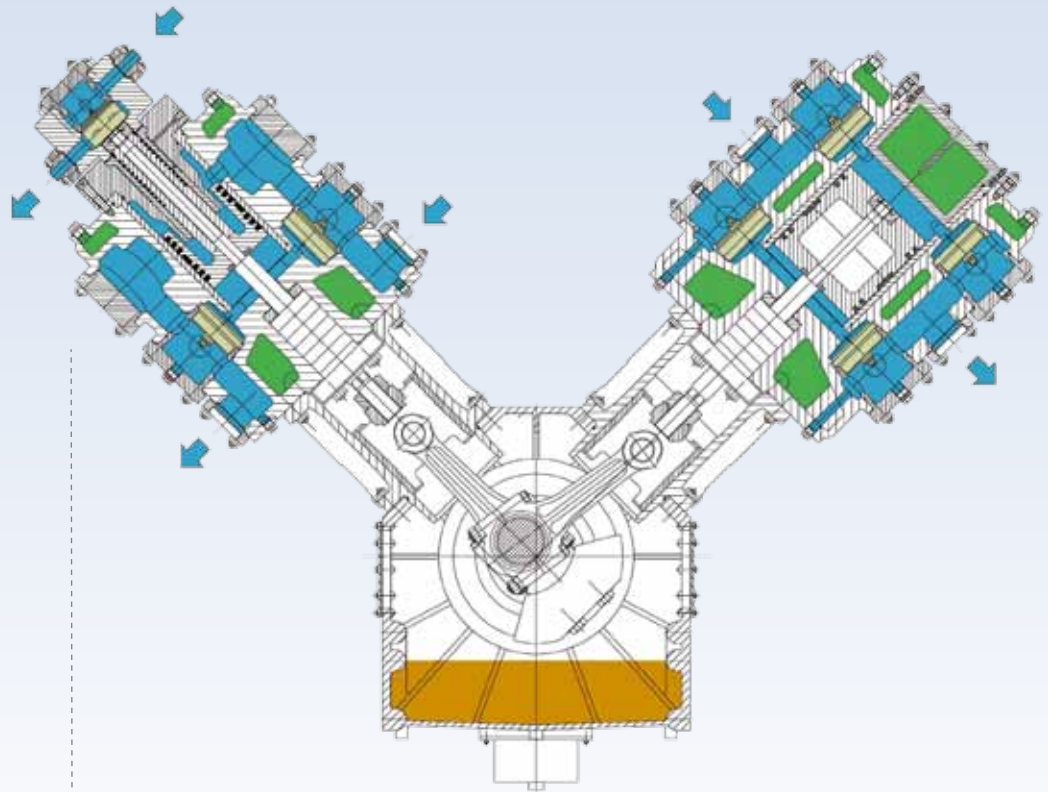




## aircooled and watercooled engineering

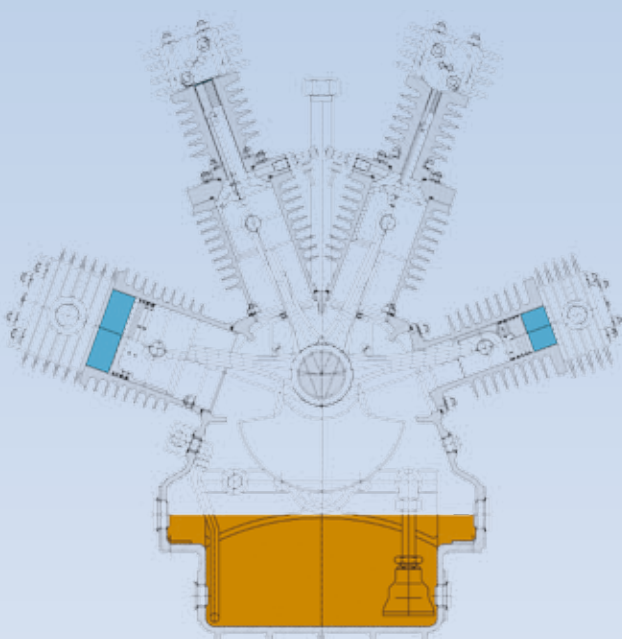
The business area of industrial applications mainly deals with air- and water-cooled high-pressure compressors for the compression of air and technical gases. These compressors are developed and manufactured in compliance with international standards. The **LMF** compressor kit construction set allows the optimal solution for each specific application – both in technical and commercial terms.

The careful selection of materials and components forms the backbone of reliable and economic operation, especially under challenging conditions – a fact **LMF** has proven for many decades in numerous successful customer applications. And there is almost no limit to LMF high pressure compressor applications.

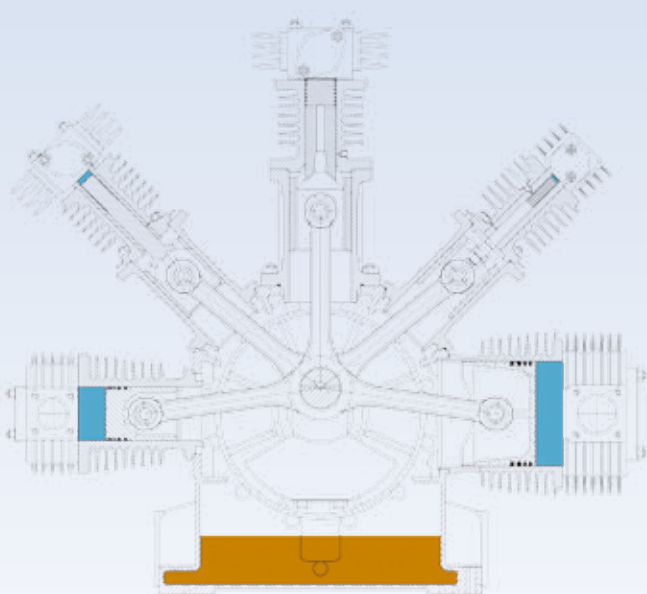


Sectional view of three-stage VC, VCS, VCL





Sectional view of four-stage V16



Sectional view of five-stage V17

## COMPRESSOR TYPES & SIZES

The compressors are available from 2 to 6 stages, with 2 to 6 single-acting cylinders. For your industrial compressor application you may either select a standard compressor from our product portfolio or request a specially modified version to cater for your specific needs.

- Compressors with power rates from 3 to 600kW (4 to 800 hp)
- final pressure rates from 30 to 500 bar (435 to 7,250 psi)
- capacities from 7 m<sup>3</sup>/h up to 1,000 m<sup>3</sup>/h (4 to 590 cfm) under atmospheric inlet conditions
- Medium: air and industrial gases
- Lubricated and oil-free.

[www.lmf.at](http://www.lmf.at)



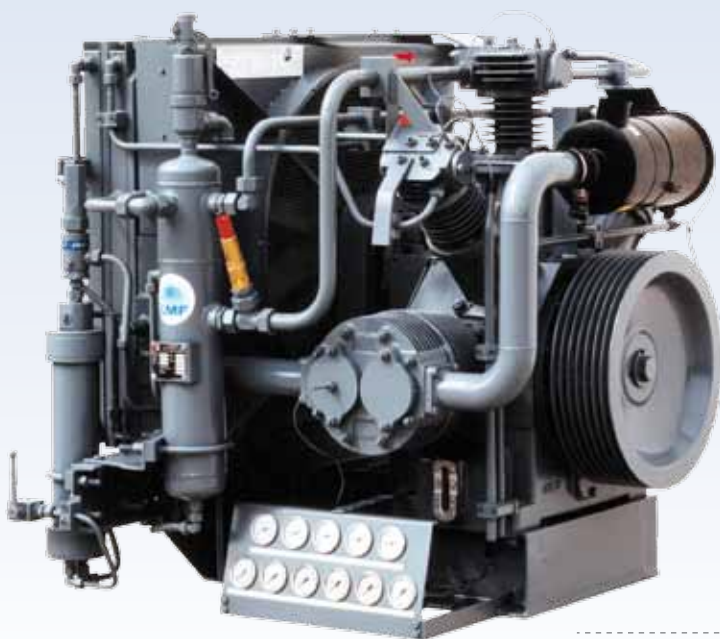
industrial applications

# aircooled solutions

for compression of air and technical gases

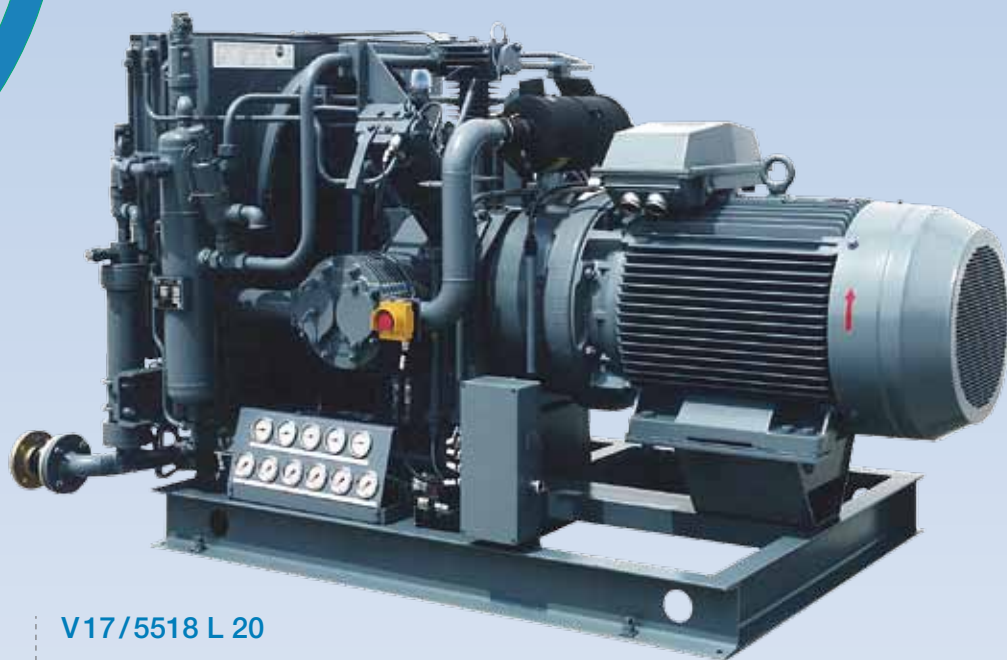
## V17/5518 L 7-42

Aircooled block, five stages, five cylinders.



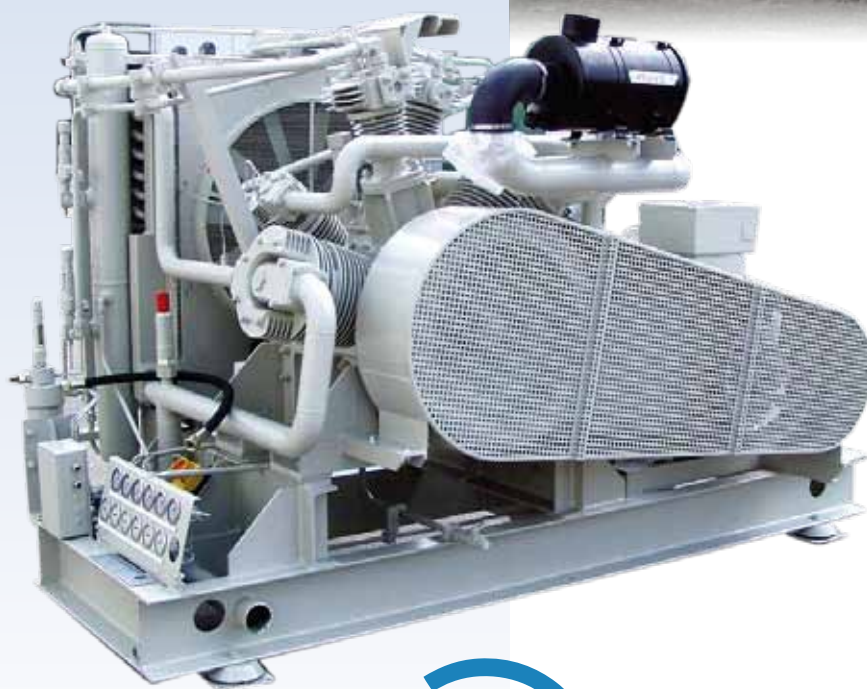
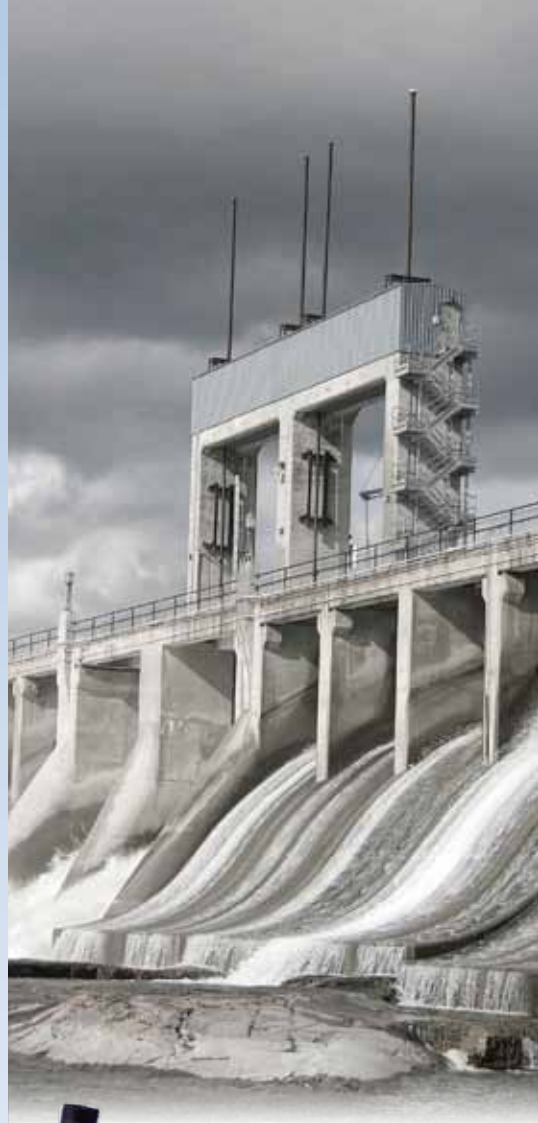
## V17/5518 L 38

Delivery 2,580 ltr/min (91 cfm), working pressure 350 bar (5,075 psi), driven by 75 kW (100 hp) electric motor.



#### **V17/5518 L 20**

Delivery 2,200 ltr/min (78 cfm), working pressure 200 bar (2,900 psi), driven by electric motor.



#### **V19/5621 L 35**

Delivery 4,570 ltr/min (161 cfm), working pressure 350 bar (5,075 psi), driven by 110 kW (150 hp) electric motor.

[www.lmf.at](http://www.lmf.at)

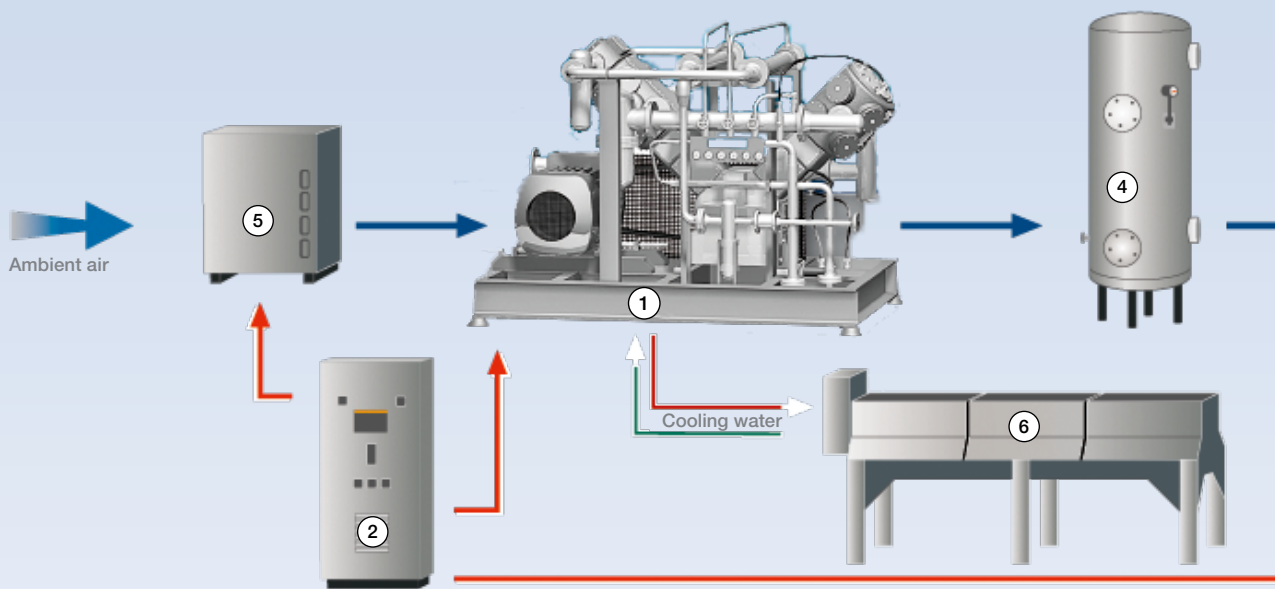




industrial applications

# watercooled solutions

for oil-free compression



## ECOPET flex-DESIGN CONCEPT

The compressor aggregate with power unit, coolers, separators and monitoring devices is mounted on a basic frame (1). The switchboard (2) is used to control and monitor all components of the system and allows communication with the blowing machine. In addition to the compressed-air reservoir (4), the modular system also contains the refrigerant type dryer (3) and the cooling unit (6).

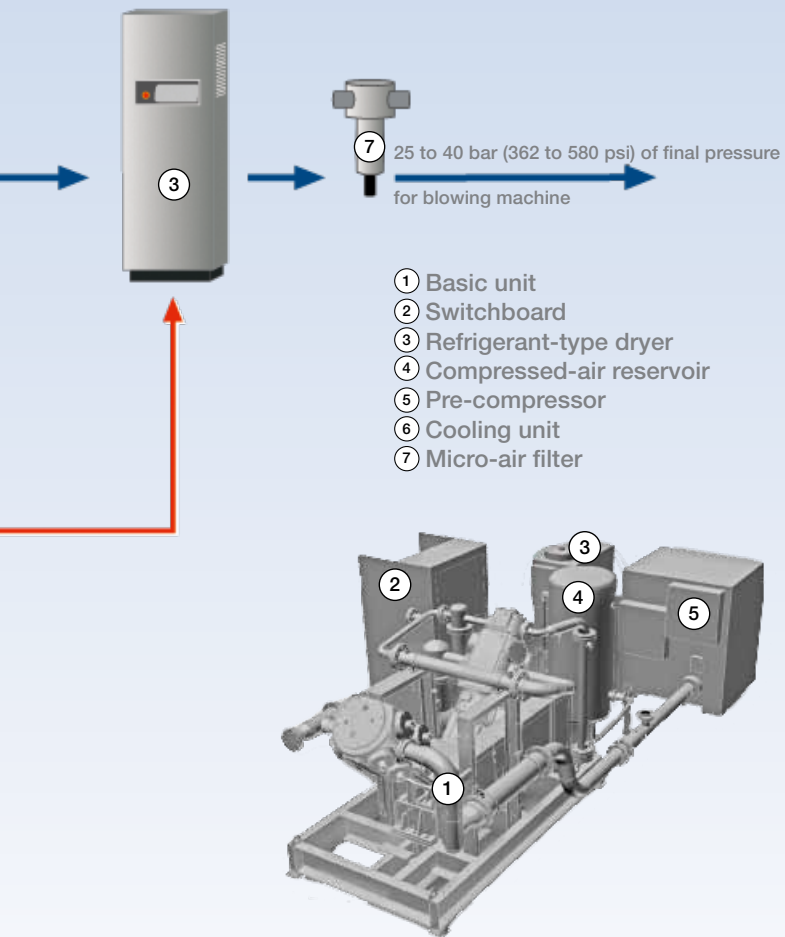
Based on a standard aggregate for an output of 600 m<sup>3</sup>/h (350 cfm) (FAD), a maximum output of up to 3,200 m<sup>3</sup>/h (1,765 cfm) is possible by adding an pre-compressor (5).

The compact design of the **LMF ECOPET** flex-concept allows an installation even in case of space restrictions.



## OIL-FREE ECOPET COMPRESSORS

Compressor units in "V"-configurations with final pressure rates of up to 40 bar (580 psi) and power rates of up to 400 kW (536 hp) are available. These compressors are largely used in PET bottle production.



[www.lmf.at](http://www.lmf.at)

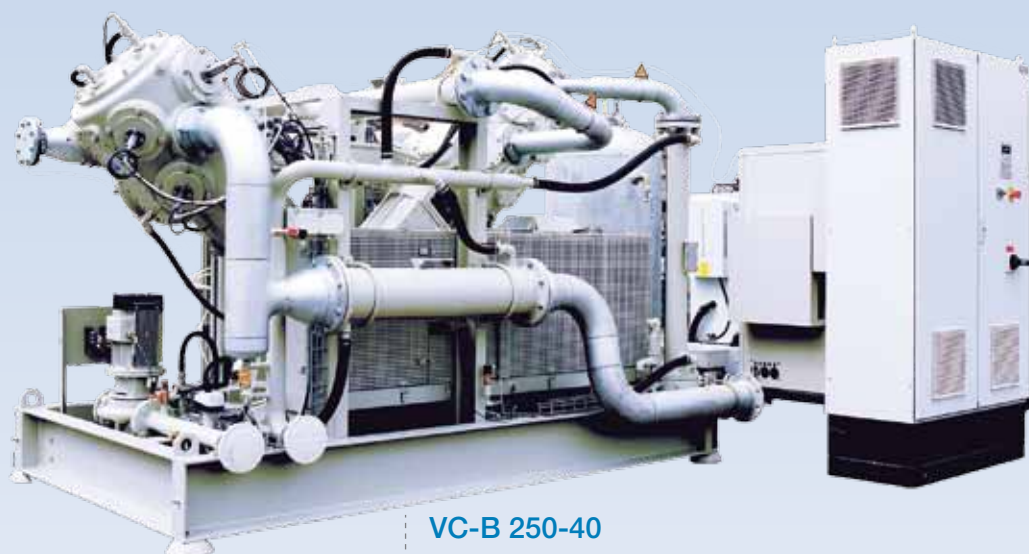


ssure solution



industrial applications

# watercooled solutions



## VC-B 250-40

Oil-free LMF ECOPET compressor package with a total capacity of 1,619 m<sup>3</sup>/h (952 cfm).

## NITROGEN COMPRESSOR PACKAGE WITH HP-COMPRESSOR VC 3216 N 6.6

Delivery 1,655 m<sup>3</sup>/h (980 scfm),  
working pressure 66 bar (957 psi),  
driven by 180 kW (245 hp) electric  
motor.



# tailor-made solutions

## V17/5518 L 20

Delivery 2,580 ltrs/min (91 cfm), working pressure 200 bar (2,900 psi), driven by direct-coupled diesel engine.



## CONTAINERIZED VC-B 200-40

Equipped with C.A.R. system (Compressed Air Recovery).

## V7D/2107 L 4.0

Delivery 10 m<sup>3</sup>/h (350 cfm), suction pressure 10 bar (145 psi), working pressure 40 bar (480 psi), electric motor 55 kW (75 hp).



[www.lmf.at](http://www.lmf.at)



**Austria  
Headquarter**

**Leobersdorfer Maschinenfabrik  
GmbH & Co.KG**

Suedbahnstr. 28  
A - 2544 Leobersdorf  
phone: +43 - 2256 - 9001  
fax: +43 - 2256 - 9002  
api - sales@LMF.at  
cng - sales@LMF.at  
ia - sales@LMF.at  
ms - sales@LMF.at  
service@LMF.at

**France**

**LMF Office France**  
france@LMF.at

**Germany**

**LMF Office Germany South/  
Switzerland**  
Bellinger Str. 39e  
D - 86316 Friedberg - Stätzling  
phone: +49 - 821 - 15 33 38  
fax: +49 - 821 - 15 33 53  
germany - south@LMF.at

**LMF Office Germany North/  
Northern Europe**  
Apfelgarten 2  
D - 24235 Laboe  
phone: +49 - 43 - 49 64 83  
fax: +49 - 4343 - 49 64 87  
germany - north@LMF.at

**Russia**

**LMF Office Russia**  
1 - st Golutvinsky Pereulok  
Bld. 6, Floor 6  
119180 Moscow  
phone: +7 - 495 - 737 08 73/74  
fax: +7 - 495 - 737 08 71  
russia@LMF.at

**Argentina  
Subsidiary**

**LMF Argentina**  
Manuel Estévez 1356 - B1871CXJ  
Dock Sud - Buenos Aires  
phone: +54 - 11 - 42 22 46 62  
fax: +54 - 11 - 42 22 19 85  
argentina@LMF.at

**China**

**LMF Office China**  
china@LMF.at

**India**

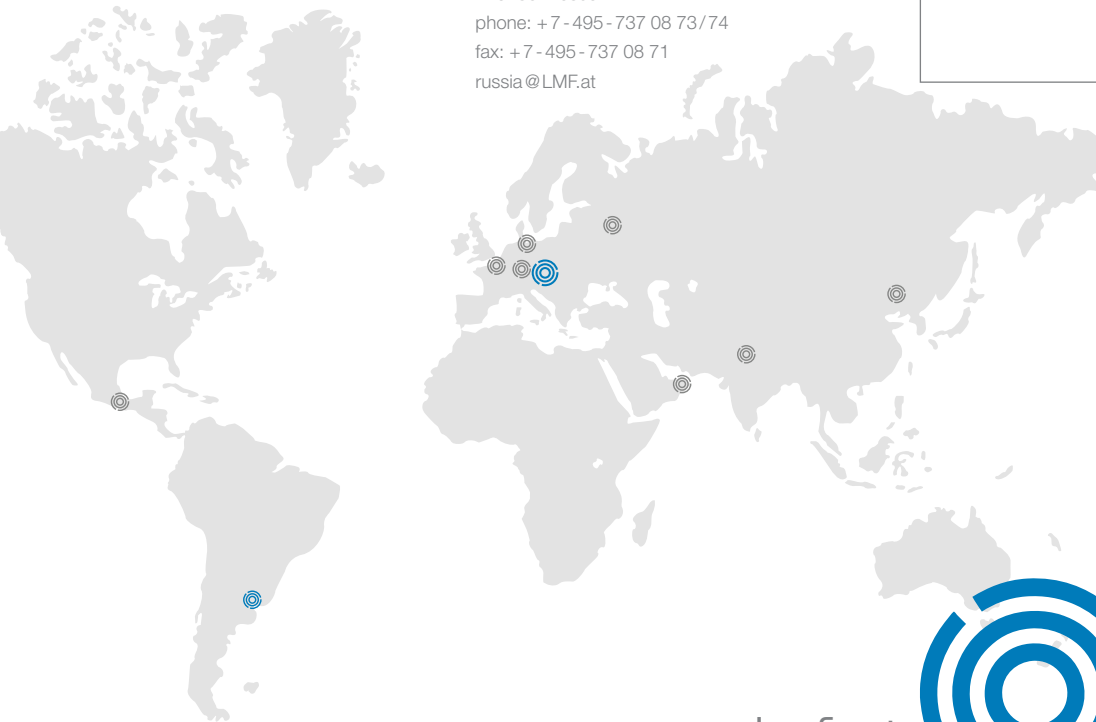
**LMF Office India**  
india@LMF.at

**Mexico**

**LMF Office Mexico**  
mexico@LMF.at

**United Arab  
Emirates**

**LMF Office United Arab Emirates/  
Middle East**  
uae@LMF.at



www.lmf.at



your high pressure solution