

YOUR HIGH PRESSURE SOLUTION



LOW SPACE REQUIREMENT

COMPACT DESIGN

DIRECT COUPLING TO ELECTRIC
MOTOR, DIESEL- OR GAS DRIVER

HIGH SPEED UP TO 1,800 RPM

RE-COOLING RADIATOR SYSTEM

EASY ACCESS FOR MAINTENANCE
AND SERVICE SPACEOPTIONAL WITH WEATHER-
PROOF ACOUSTIC ENCLOSURE

YOUR HIGH PRESSURE SOLUTION



YOUR HIGH PRESSURE SOLUTION



Austria
Headquarter **Leobersdorfer Maschinenfabrik
GmbH & Co.KG**
Suedbahnstr. 28
A-2544 Leobersdorf
phone: +43-2256-9001
fax: +43-2256-9002
API-sales@LMF.at
CNG-sales@LMF.at
IA-sales@LMF.at
MS-sales@LMF.at
service@LMF.at

France **LMF Office France**
48 Rue des Glaïses
F-92160 Antony
phone +fax: +33-1-55599689
france@LMF.at

Germany **LMF Office Germany South / Switzerland**
Beilinger Str. 39e
D-86316 Friedberg-Stätzing
phone: +49-821-153338
fax: +49-821-153353
germany-south@LMF.at

LMF Office Germany North / Northern Europe
Apfelgarten 2
D-24235 Laboe
phone: +49-43-496483
fax: +49-4343-496487
germany-north@LMF.at

Russia **LMF Office Russia**
1-st Golutvinsky Pereulok,
bld. 6, floor 2
119180 Moscow
phone: +7-495-7370873/74
fax: +7-495-7370871
russia@LMF.at

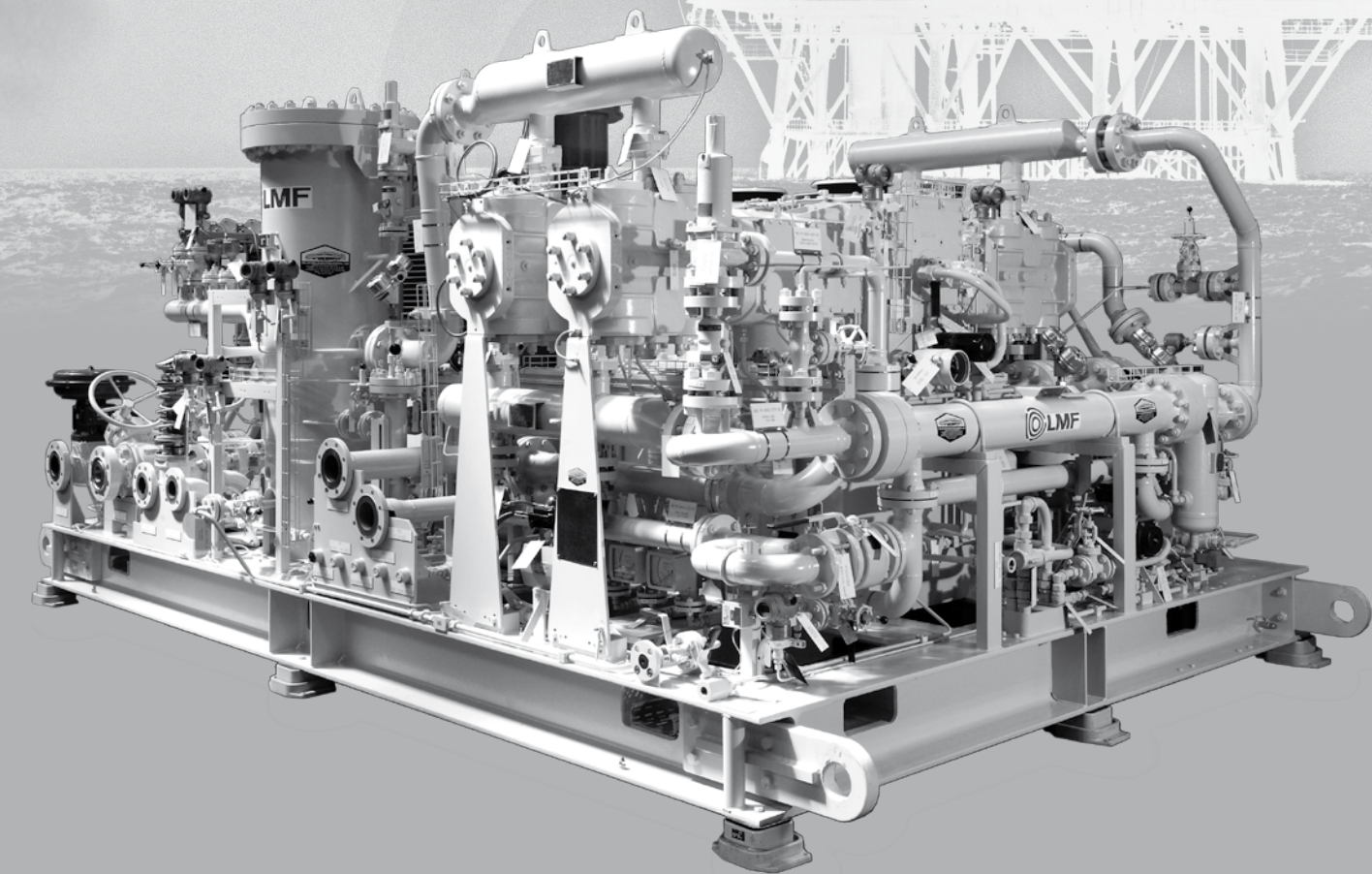
Argentina
Subsidiary **LMF Argentina**
Manuel Estévez 1356-B1871CXJ
Dock Sud - Buenos Aires
phone: +54-11-42224662
fax: +54-11-42221985
argentina@LMF.at

China **LMF Office China**
china@LMF.at

India **LMF Office India**
india@LMF.at

Mexico **LMF Office Mexico**
Bosques de Pome N 12 C-7 Col.
Paseos del Bosque
Naucalpan Edo. de México
CP 53297 México
phone: +52-55-5364-6974
mexico@LMF.at

United Arab
Emirates **LMF Office United Arab Emirates**
LMF Middle East
uae@LMF.at



**HIGH SPEED
BALANCED-OPPOSED
COMPRESSOR**

RECIPROCATING COMPRESSOR SYSTEMS
FOR THE GAS INDUSTRY



BS SERIES

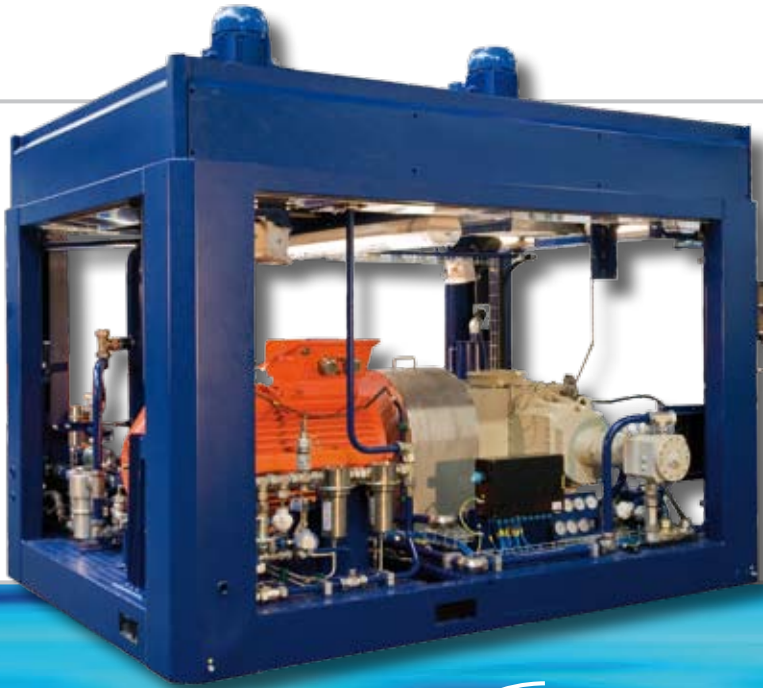
The compressor units can be supplied from skid-mounted packages up to a flexible designed / fully packaged turnkey unit. The compressors are directly driven, mounted on a structural steel frame including coolers, safety valves, separators and automatic condensate drain after each stage, automatic suction valve unloading system. Furthermore included are pressure and temperature gauges, pressure switches, terminal box, control panel and electric motor.

APPLICATIONS:

- Gas gathering, gas lifting
- Gas boosting, gas turbine feeding
- Gas storage, gas reinjection
- Alternative to API compressors for process use
- Gas applications
- CNG

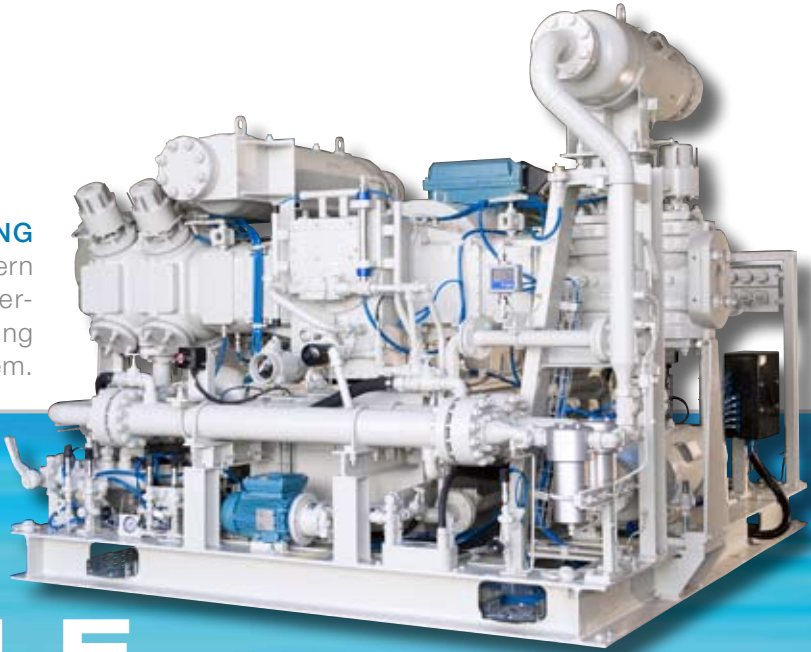
BS 102 FOR CNG

Compact CNG compressor package, min-lubricated, including electrical drive, directly coupled, with blow down tank, air cooled design, gas coolers and cooling fans on the top, all mounted on a common skid structure.



BS 302 FOR GAS GATHERING

High speed compressor, mounted in Northern Germany. Available also with optional weather- and sound-proof enclosure as well as air cooling system.



FRAME SPECIFICATIONS

YOUR FLEXIBLE APPLICATIONS

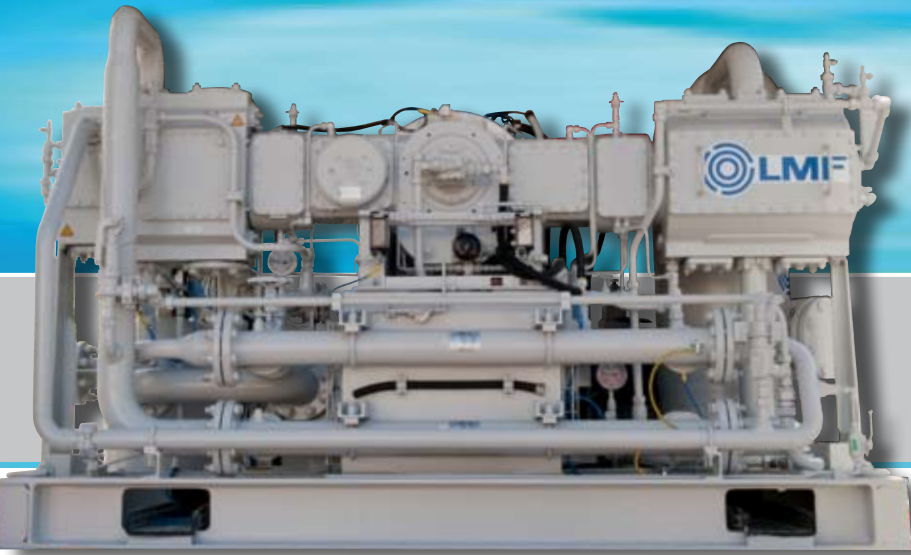
SERIES BS 102, BS 302, BS 604, BS 502 AND BS 1004

series		BS 102	BS 302	BS 604	BS 502	BS 1004
		2 throws	2 throws	4 throws	2 throws	4 throws
rated power	hp (kW)	136 (100)	408 (300)	816 (600)	680 (500)	1,360 (1000)
max. speed (lubricated)	rpm	1,800	1,800	1,800	1,200	1,200
stroke (standard)	in (mm)	3.93 (100)	3.93 (100)	3.93 (100)	5.9 (150)	5.9 (150)
max. piston speed	ft/m (m/s)	1,181 (6)	1,181 (6)	1,181 (6)	1,181 (6)	1,181 (6)
max. speed (non-lubricated)	rpm	1,200	1,200	1,200	1,000	1,000
stroke (standard)	in (mm)	3.93 (100)	3.93 (100)	3.93 (100)	4.72 (120)	4.72 (120)
max. piston speed	ft/m (m/s)	790 (4)	790 (4)	790 (4)	790 (4)	790 (4)
total rod load	lbs (N)	7,870 (35,000)	16,860 (75,000)	16,860 (75,000)	24,543 (110,000)	24,543 (110,000)
piston rod diameter	in (mm)	1.26 (32)	1.57 (40)	1.57 (40)	2.36 (60)	2.36 (60)

Bigger machine sizes and higher power range of high speed compressors are also available. Compressor blocks from bigger LMF sizes will be used with reduced stroke and higher shaft speed.

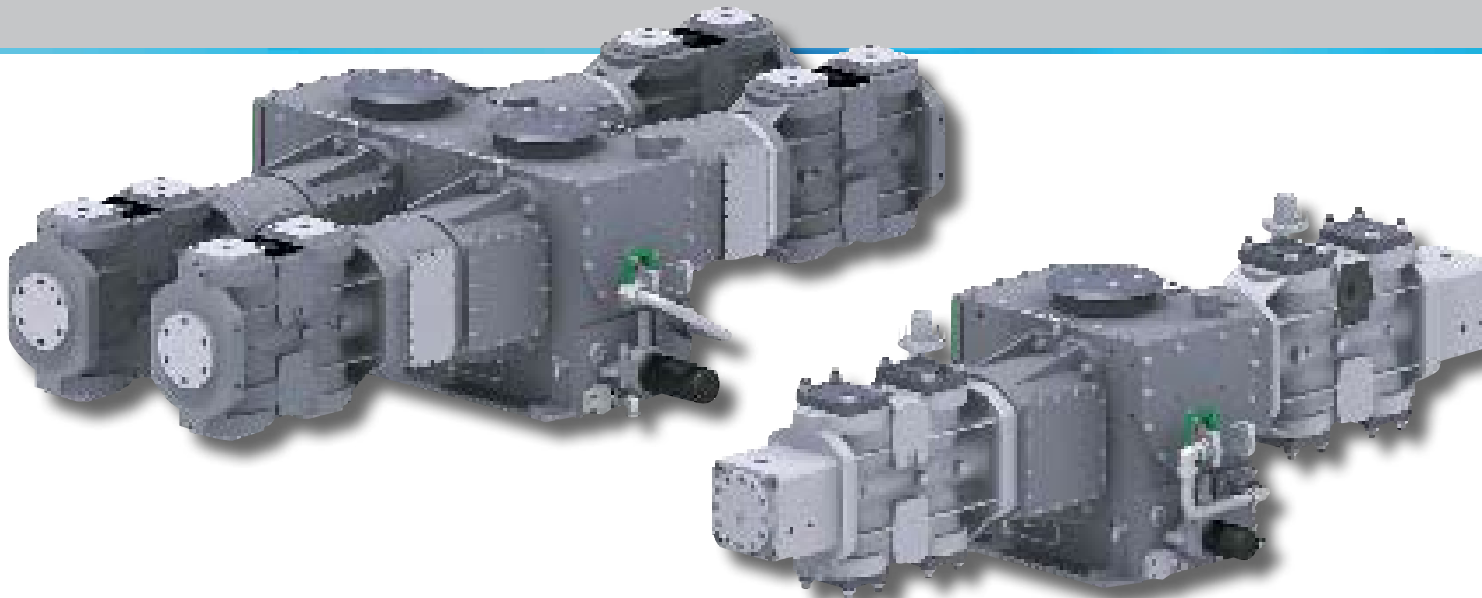
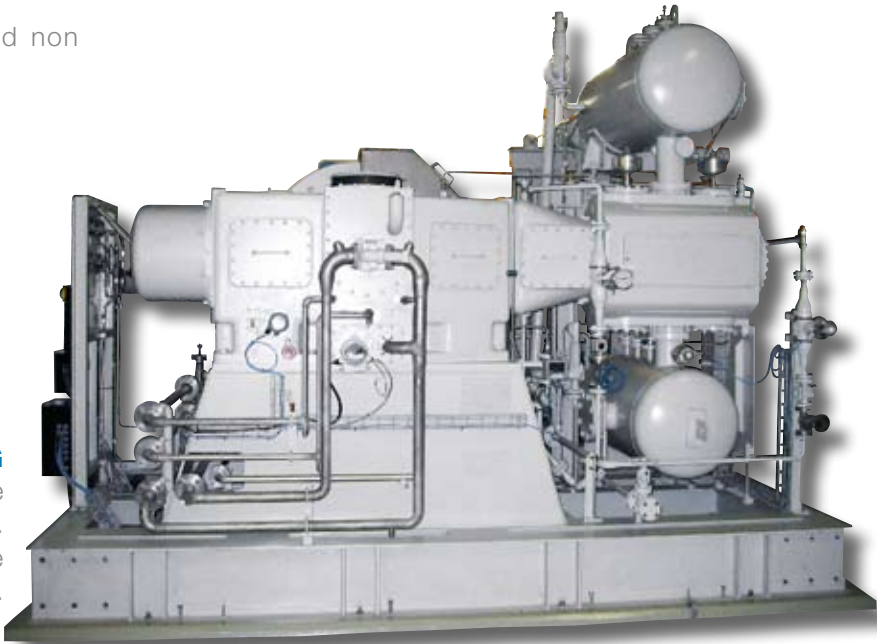
BS 102 FOR BIOGAS

Biogas compressor with distance peaces and non lubricated, water cooled cylinders.



B 181 FOR GAS TURBINE FEEDING

High speed 400 kW block for gas turbine feeding in Lithuania up to 1,000 psi [70 bar]. Variable speed to control the flow according the need of the gas turbine system.



BS SERIES

A balanced-opposed, two- or four-crank reciprocating compressor, crosshead design, with two, three or four stages, air-cooled, min-lubricated

- Capacities from 300 scfm [480 Nm³/h] up to 5,000 scfm [8,000 Nm³/h]
 - Inlet pressures from 20 psia [1.5 bar abs] up to 725 psia [50 bar abs]
 - Delivery pressure 3,650 psia [251* bar abs]
- *(Higher pressures on request)